



COOL

# COOLING

GENTLE | HIGH VELOCITY | IMPINGEMENT



MIX



FEED



FORM



BAKE



CONTROL



## ADVANTAGES:

- FLEXIBLE SPEED TO MARKET
- DESIGNED FOR TODAY'S SANITARY REQUIREMENTS
- CUSTOMIZATION IS OUR STANDARD
- ENGINEERED COOLING SOLUTIONS

**ADVANTECH**  
BAKERY TECHNOLOGY

Richmond, Kentucky | 859-408-2112 | [info@advantechbake.com](mailto:info@advantechbake.com) | [www.advantechbake.com](http://www.advantechbake.com)





# COOLING

## COOLING TUNNELS

- All Stainless steel, wash-down design
- Modular design for efficient installation
- Removable duct panels based on cooling configuration and sanitation
- Chill decks with independent controls available



## SANITARY DESIGN

- Removable Impingement Plates
- UV Light Sanitation in Coil Area
- All Stainless Steel Construction



## ELECTRICAL

- Allen Bradley Controls Standard
- PLC/HMI Controls for Customization

## INSTALLATION

Full Service Installation Available



**ADVANTECH**  
BAKERY TECHNOLOGY

Richmond, Kentucky | 859-408-2112 | [info@advantechbake.com](mailto:info@advantechbake.com) | [www.advantechbake.com](http://www.advantechbake.com)







COOL

# COOLING

GENTLE | HIGH VELOCITY | IMPINGEMENT



MIX



FEED



FORM



BAKE



CONTROL



## ADVANTAGES:

- FLEXIBLE SPEED TO MARKET
- DESIGNED FOR TODAY'S SANITARY REQUIREMENTS
- CUSTOMIZATION IS OUR STANDARD
- ENGINEERED COOLING SOLUTIONS

**ADVANTECH**  
BAKERY TECHNOLOGY

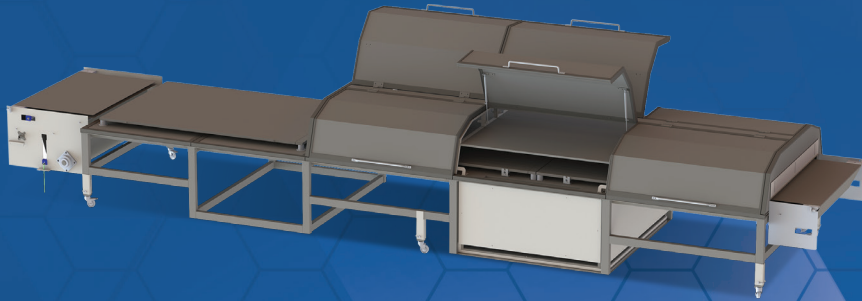
Richmond, Kentucky | 859-408-2112 | [info@advantechbake.com](mailto:info@advantechbake.com) | [www.advantechbake.com](http://www.advantechbake.com)







# COOLING



## COOLING TUNNELS

- All Stainless steel, wash-down design
- Modular design for efficient installation
- Removable duct panels based on cooling configuration and sanitation
- Chill decks with independent controls available

## SPIRAL COOLERS

- Direct drive system
- Fully automated
- Efficient heat transfer
- Product uniformity



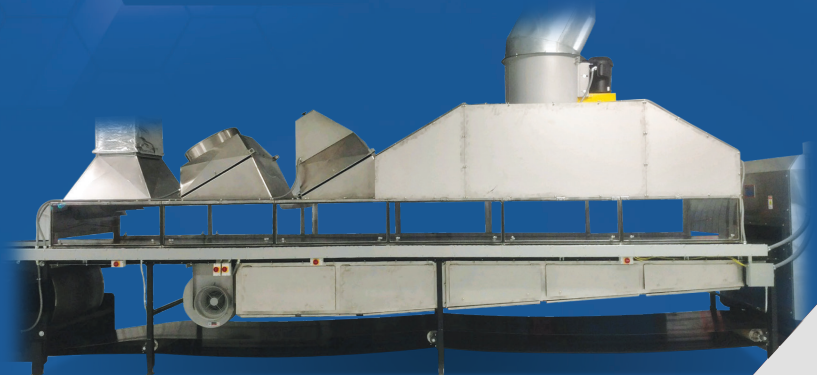
## FANS

- Economical impingement cooling option for standard conveyors
- Filtered/non-filtered options
- All stainless steel construction
- Electrical package available with VFD



## EXHAUST HOODS

- Stainless steel construction
- Integrated into conveyor design
- Efficient, high output exhaust fan with VFD option



**ADVANTECH**  
BAKERY TECHNOLOGY

Richmond, Kentucky | 859-408-2112 | [info@advantechbake.com](mailto:info@advantechbake.com) | [www.advantechbake.com](http://www.advantechbake.com)

